

# 3

## **GRAMCORD Reference**

Chapter 3 of the GRAMCORD™ GNT with Bible Companion™: User's Guide is a Technical Reference Appendix to provide Users with more Detailed Information about the Operation of GRAMCORD and the GRAMCORD Template. It is an expansion of the Online Help File available within GRAMCORD with Bible Companion.

## 3 - 2 GRAMCORD Reference

# THE GRAMCORD SEARCH TEMPLATE



After pressing the GRAMCORD Search button on the Bible Companion Button Bar, the GRAMCORD Template will appear.

**The GRAMCORD Search Template** is the way to use GRAMCORD to find even the most complex Grammatical Constructions in the Greek New Testament. The Template allows you to fill in the Columns with the information on each Element of the Greek Construction you wish to find. The Template is designed so that, in most cases, you cannot ask for things which cannot occur in Greek as it guides you through your options and choices.

**At the Top of the Template** are the Option buttons and displays for selecting the number of Constructions, the Range of New Testament Books to Search, the Type of Search you wish to perform (Clause, Sentence, Verse), *etc.*

**At the Bottom of the Template** are the List boxes and Spin buttons which allow you to set the Distance between each word, Agreements between words, Position of Words, *etc.*

A second, **Lemma Pick Window**, which is activated when you click on Lemma(s) at the bottom of each Column, allows you to pick the Lemma(s) you desire from a list which corresponds to the Part of Speech you have chosen.

## THE PARTS OF THE TEMPLATE:

### ***THE HEADER SECTION OF THE TEMPLATE: CONFIGURATION OF THE SEARCH:***

## CONSTRUCTION



GRAMCORD allows the User to Search for up to 5 separate Grammatical Constructions at the same time. A Construction is composed of Grammatical Elements, which are defined in the Template Columns, from left to right, as they would occur in the Grammatical Construction being searched for. By pressing the left or right arrow keys the User may scroll through the various Constructions being defined.

## COPY



By Clicking on the Double Arrow button, the User can Copy Construct #1 to #2 automatically, to provide a basis for defining Construction #2.

## CONTEXT



Since Constructions possess width, the Template will automatically increment the Context field as each new Element is defined on the Template. As a result, by default, the Context will be the number of words in a Construction from first to last element inclusive (less “Excluded” and “InterData” Elements). When Context is not manually changed by the User, a Context equal to the number of elements in the construction is assumed. (A Context LESS than the total number of elements is obviously illegal.) A Context equal to the number of elements in the construction is another way of saying that no other words may intervene between the defined elements. Thus, a two element construct with Context of 2 would mean the two words are adjacent to each other. A Context of 3 would allow either zero or one intervening word. A Context of 200 would refer to a Construction which potentially spans an entire sentence.

In general, it is suggested that the Context field be enlarged beyond the number of Elements chosen. For instance, since Crisis is considered a two word phenomenon under GRAMCORD, the Context would require adjustment to two words rather than one. For this and several other reasons, grammatical searches should allow for a generous Context field so as to prevent an overly restrictive definition and the attendant loss of potentially significant occurrences of the construction. The Context can easily be lowered in subsequent Searches to eliminate incorrect hits.

## 3 - 4 GRAMCORD Reference

### CLEAR

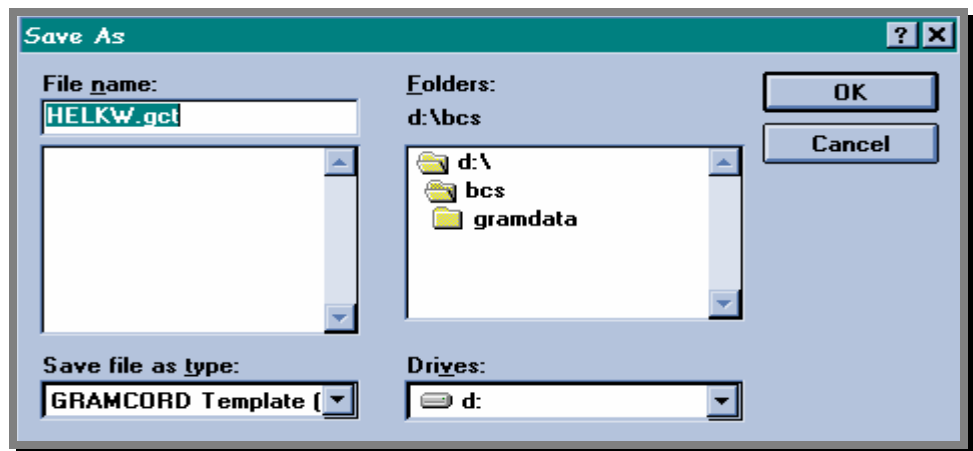


The User may Clear all information from the Template in order to begin defining a new Construction. This should be done before beginning any new construction to ensure that all the possible previous data is eliminated from every previous Construction.

### SAVE



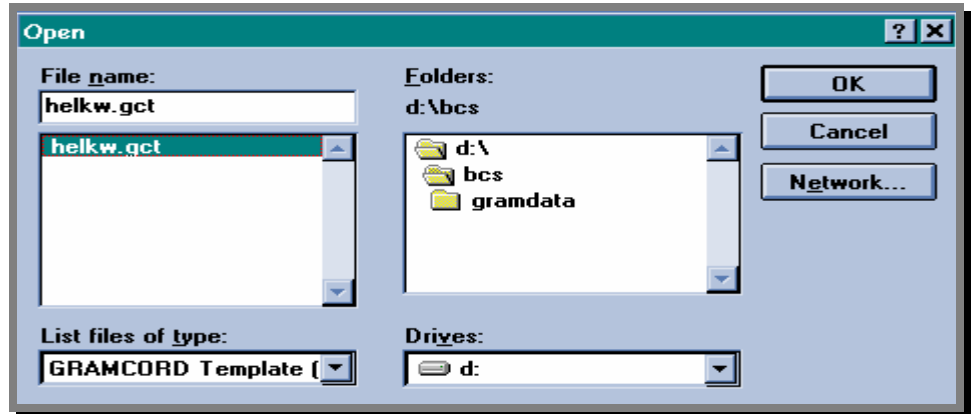
The User may Save the Construction under a unique file name, which may be retrieved (= Open) later for use.



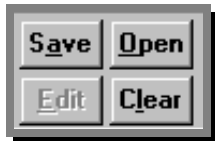
## OPEN



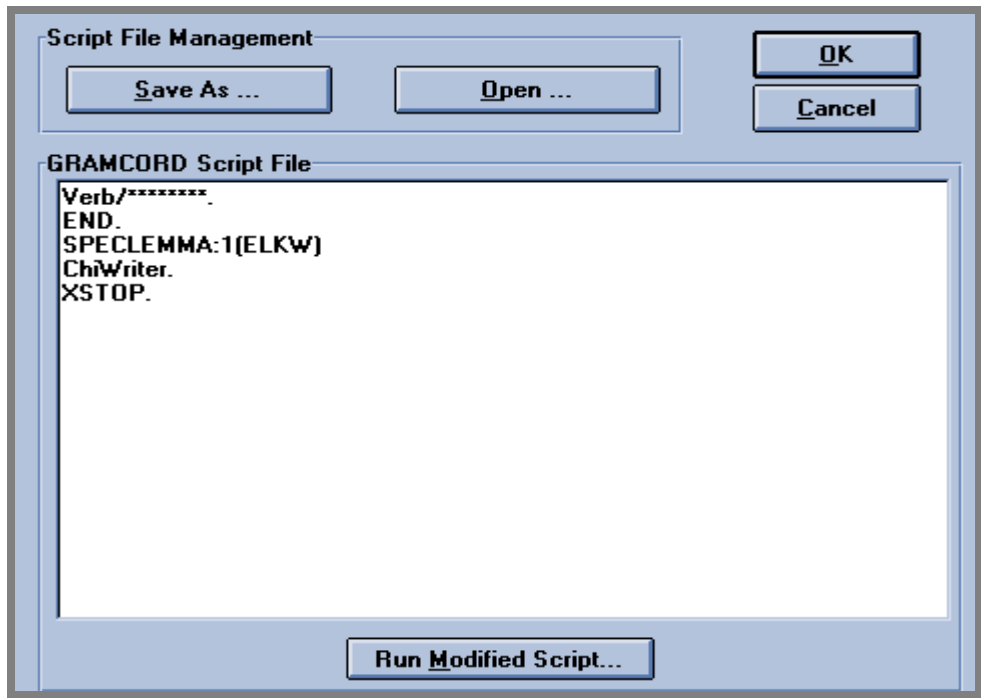
The User may retrieve a previously Saved Construction for further editing or executing. In order to retrieve old GRAMCORD “Command” or “Script” format files, see "Edit" below.



## EDIT (If “Edit” is grayed out, then function is temporarily disabled):



The User may Edit, View, and Run the Construction as it is being defined in GRAMCORD "Script/Command File" format, assuming the User is acquainted with the GRAMCORD "Script File" format and commands.



## 3 - 6 GRAMCORD Reference

The User may also retrieve previously defined Constructions which follow the GRAMCORD “Command File” format, and execute them to see the results in Bible Companion. However, the retrieved Script file may be Viewed and Edited in the Script Window only; it will not be installed into the Template for viewing and editing.

For Users who have previously written extensive GRAMCORD files and only want to run them and have the results returned to Bible Companion so that they can print them (directly or via their Windows -based Word Processor), there is a Menu pick which allows this to be done directly. The User should choose **Search...Run GRAMCORD Script** which will open a "File Open" Dialogue box to allow the User to pick the GRAMCORD file to run.

### SEARCH



The User may execute a GRAMCORD Search for the Construction defined in the Template. A status bar will appear while the Search is performed; most Searches will take about 10 seconds.

### CANCEL



The User may Cancel the GRAMCORD Search operation and safely return to the Bible Companion Window.

### ADVANCED



The User may access the settings displayed in the “Type of Search” and “Range” Windows by either clicking on those display windows or the “Advanced” button. Clicking on the “Advanced” button takes the User to the “Advanced Dialog” Template to set the various items (see below).

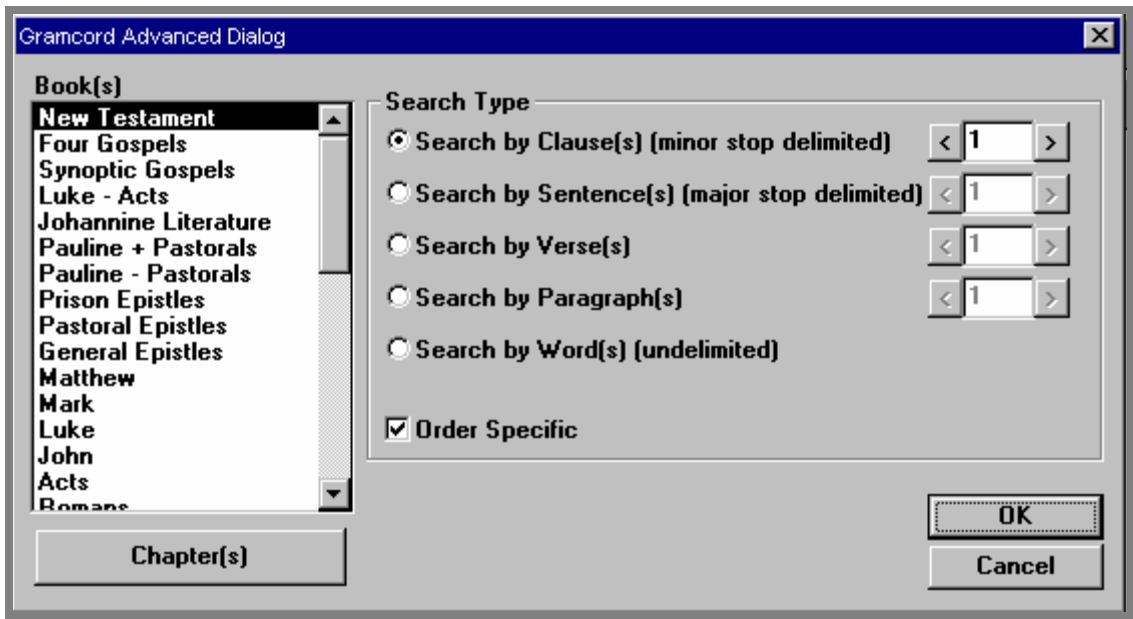
### SEARCH TYPE



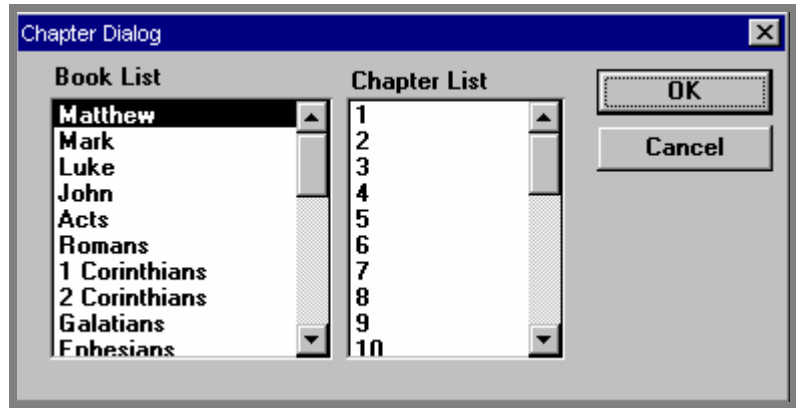
The User may access the “Advanced Dialog” Template by clicking on the “Search Type” window. On the second Template (see below) the Type of Search and the Order of the Elements can be selected.

**BOOK(S):**

The User may access “Advanced Dialog” Template by clicking on the “Book(s)” Window (as well as the “Type of Search” windows and the Advanced button). On this second Template the User can narrow the Search to specific Ranges of NT Books, Individual NT Books, as well as specific Chapters.

**ADVANCED DIALOG TEMPLATE**

**BOOK(S):** The selections on the left side of the “Advanced Dialog” allow the User to choose the Book(s) to Search in. Clicking on the “Chapter(s)” button will allow the User to narrow the Range further to specific Chapters in the selected Books. Several collections of Books precede the individual listing of each NT Book.



**The Selection Process in both Dialogs** is made according to standard Windows’ conventions: *Mouse Click* selects a single item (and deselects any others); *Ctrl-Mouse Click* deselects the specific item only or selects an additional random item; *Shift-Mouse Click* selects a continuous range of items back up to the previous selection.

## 3 - 8 GRAMCORD Reference

**SEARCH TYPE:** On the right hand side of the Advanced Template are the Options for setting the “Type” of Search the User wishes to perform, *i.e.*, Search with Clause, Sentence, Verse, or Paragraph boundaries delimiting the Search, or Search with no boundaries at all.

Each of the Options is selected by a simple Mouse Click, and the number of Clauses, Verses, *etc.*, the User wishes the boundaries for the Search to span can be incremented or decremented by clicking on the right or left arrow keys.

**Clauses** are defined as being delimited by “Minor Stops,” which in GRAMCORD corresponds to commas and dashes.

**Sentences** are defined as being delimited by “Major Stops,” which in GRAMCORD corresponds to periods, question marks, and high points (colon, semi-colon).

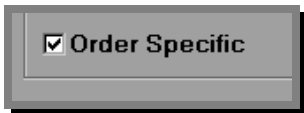
**Verses** and **Paragraphs** delimitation is derived from the NA<sup>27</sup> text (which does differ from the UBS<sup>4</sup> text with respect to paragraphs), which is not exactly the same as that of the English versions. Following is a Table which lists the versification differences between: GNT/UBS<sup>3/4</sup>/NA<sup>26/27</sup> and English Bibles using the KJV/TR versification (all except NRSV).

NT BOOK	ENGLISH/KJV MAP	GREEK/NA/UBS MAP
Matthew	2:1 - last word	2:2 - first word
	25:16 - first word	25:15 - last word
Mark	12:15 - first clause	12:14 - last clause
Luke	7:19 - first clause	7:18 - last clause
	22:66 - last word	22:67 - first word
John	4:36 - first word	4:35 - last word
Acts	3:19 - second half of verse	3:20 - first half of verse
	5:40 - first clause	5:39 - last clause
	13:39 - first half of verse	13:38 - last half of verse
	19:41	19:40 - last sentence
	24:18 - last clause	24:19 - first clause
Romans	9:11 - last two clauses	9:12 - first half
2Corinthians	10:5 - first clause	10:4 - last sentence
	13:13 -	13:12 - last sentence
	13:14	13:13
Galatians	2:20 - first clause	2:19 - last sentence
Ephesians	2:15 - first clause	2:14 - last 2 clauses
	5:13 - last clause	5:14 - first sentence
Philippians	2:8 - first clause	2:7 - last clause
1Thessalonians	1:3 - first word	1:2 - last word
	2:6 - last clause	2:7 - first clause
	2:11 - middle of sentence	2:12 - first half of sentence

Hebrews	3:9 - last 2 words	3:10 - first two words
	7:21 - first clause	7:20 - last half of sentence
	12:23 - first 4 words	12:22 - last word
1John	2:13 - last sentence	2:14 - first sentence
Revelation	2:27 - last clause	2:28 - first half
	13:1 - first sentence	12:18
	17:10 - first clause	17:9 - last clause
1John	4:18 - first clause	4:17 - last clause (NA <sup>26</sup> ONLY; NA <sup>27</sup> /UBS <sup>4</sup> match KJV map)

**Word(s)** is an undelimited Search in that it ignores all punctuation and other boundaries and starts with the first Element of your Search and continues looking for the next Element based on the “Context” distance you have set for the Search.

**ORDER SPECIFIC** refers to the Order of the Elements in a Search. Whether the Elements of a Search should occur in the Order the User put them in when the Construction was designed is determined by Checking or Unchecking the “Order Specific” box on the Advanced Template. Since grammar normally occurs in a specific sequence, the GRAMCORD default is to have “Order Specific” checked, *i.e.*, active. However there are situations where the User would want to find a certain number of Elements in any order; to make GRAMCORD Search that way, the User would uncheck the “Order Specific” box.



## 3 - 10 GRAMCORD Reference

### ***THE BODY OF THE TEMPLATE: THE ELEMENTS OF THE SEARCH:***

#### **CLASS TYPE**

<b>Class Type:</b>	[none] ↓
<b>Tense:</b>	[none]
<b>Voice:</b>	Adjective
<b>Mood:</b>	Adverb
<b>Person:</b>	Article
<b>Number:</b>	Conjunction
<b>Gender:</b>	ImpPrep
<b>Case:</b>	Interjection
<b>Class:</b>	Noun
<b>Subclass:</b>	Particle
<b>Degree:</b>	Preposition
<b>Lemma(s):</b>	Pronoun
	Verb
	Exclude...
	InterData...

The Class Type Pull Down List presents the Greek Parts of Speech to choose from for the Element being defined in the column in the Construction.

The Pull Down List also presents the options to define an EXCLUDEd Item or INTERDATA Item.

## EXCLUDE...

Class Type:	[none]
Tense:	[none]
Voice:	Adjective
Mood:	Adverb
Person:	Article
Number:	Conjunction
Gender:	ImpPrep
Case:	Interjection
Class:	Noun
Subclass:	Particle
Degree:	Preposition
Lemma(s):	Pronoun
	Verb
	<b>Exclude...</b>
	InterData...

Class Type:	Adjective
Tense:	
Voice:	
Mood:	
Person:	
Number:	any
Gender:	any
Case:	any
Class:	
Subclass:	
Degree:	any
Lemma(s):	

When **Exclude** is chosen from the Class Type list, the whole column is changed to Red to visually indicate that the item is to be Excluded, and awaits the User to choose the Part of Speech to be Excluded.

*This Column is  
RED*

**Exclude** allows the User to specify items which may not either Precede, Intervene, nor Follow the Elements in the Construction being defined. These items are not Elements of the Construction, but rather are Parts of Speech which the User is prohibiting from occurring at certain points in the Construction. Moreover, since these items are not Elements in the Construction they are not included within the Context field of the Construction.

A good example of the use of **Exclude** would be in searching for Granville -Sharp Constructions (*i.e.*, Article-Noun-καί-Noun) in which an Article occurring before the second Noun must be excluded (see 2-16 of this Manual for an example of what such a Construction would look like with the Template fully filled in). Other examples would be Searches for Anarthrous or Articular Apollonius' Canon Constructions, or Adverbial/Circumstantial Participles which must by definition be anarthrous and have no related Noun.

## 3 - 12 GRAMCORD Reference

### INTERDATA...

Class Type:	[none]
Tense:	[none]
Voice:	Adjective
Mood:	Adverb
Person:	Article
Number:	Conjunction
Gender:	ImpPrep
Case:	Interjection
Class:	Noun
Subclass:	Particle
Degree:	Preposition
Lemma(s):	Pronoun
	Verb
	Exclude...
	<b>InterData...</b>

Class Type:	Adjective
Tense:	
Voice:	
Mood:	
Person:	
Number:	any
Gender:	any
Case:	any
Class:	
Subclass:	
Degree:	any
Lemma(s):	

When **Interdata** is chosen from the Class Type list, the whole column turns **GREEN** and awaits the User to choose the Part of Speech to be included as an Interdata item.

*This Column is  
**GREEN***

**Interdata** (*i.e.*, INTERvening DATA) specifies that if a word or words occurs between the designated elements (thus, Interdata is never used before the first or after the last Element), the word(s) must possess the grammatical characteristics the user defines. This command is very useful in situations where two elements should be adjacent except when particular types of words intervene. For example, a Construction definition searching for an Article + a Noun in full grammatical agreement where the Article and Noun are adjacent OR separated only by Adjectives, Participles, and Coordinating Conjunctions. The Interdata option is used when the User knows that certain grammatical phenomena may appear within a Construction but such phenomena are not to be included among the required defined elements. In other words, if these phenomena do not NECESSARILY occur in the construction being defined, they can NOT be included as elements. Thus, the Interdata option provides constraints as to what MAY, by the User's permission, intervene or interrupt a construction. If words DO appear between elements of a construction, the Interdata option determines what grammatical characteristics (data) these words MUST possess.

The Interdata option is not affected by the Minor Stops option. Recall that this option permits Minor Stops to appear between construct elements. (The comma and dash are Minor Stops.) GRAMCORD finishes the punctuation examination before the Interdata option is executed.

## ADJECTIVES:

CLASS Type:	Adjective
Tense:	[none]
Voice:	Adjective
Mood:	Adverb
Person:	Article
Number:	Conjunction
Gender:	ImpPrep
Case:	Interjection
Class:	Noun
Subclass:	Particle
Degree:	Preposition
Lemma(s):	Pronoun
	Verb
	Exclude...
	InterData...
	any lemma

CLASS Type:	Adjective
Tense:	
Voice:	
Mood:	
Person:	
Number:	any
Gender:	any
Case:	any
Class:	
Subclass:	
Degree:	any
Lemma(s):	any lemma

CLASS Type:	Adjective
Tense:	
Voice:	
Mood:	
Person:	
Number:	Singular
Gender:	Masculine
Case:	any
Class:	Nominative
Subclass:	Genitive
Degree:	Dative
Lemma(s):	Accusative
	Vocative
	<Exclude>

When **Adjective** is chosen the following additional items become available to further narrow the definition for the Element:

*Gender, Number, Case, Degree, and Lemma.*

Each of the parts of an Adjective can be defined further by the items in the pull-down list; Multiple items and Excluded items are acceptable:

- Gender:** Masculine, Feminine, Neuter
- Number:** Singular, Plural
- Case:** Nominative, Genitive, Dative, Accusative, Vocative
- Degree:** No (or Positive) Degree, Comparative, Superlative
- Lemma:** Any Adjective (= <any lemma>) or Choose from Lemma List  
(restricted to Adjectives)

**Additional Information:** The so called "Substantival use" of the Adjective is generally understood as an Adjective, with an appropriate Noun to be mentally supplied. Many however have almost become frozen forms, and for these GRAMCORD will frequently have Alternates with both the Adjective and Noun tag ( e.g., **σωτήριος** and **σωτήριον**). Exceptions to this pattern are classified as Nouns in GRAMCORD when the usage has become so fixed as to be almost universal (e.g., **πρεσβυτερος** in Luke 15:25 is classed as an Adjective; elsewhere almost always as Noun).

## 3 - 14 GRAMCORD Reference

### ADVERBS:

CLASS Type:	Adverb
Tense:	[none]
Voice:	Adjective
Mood:	Adverb
Person:	Article
Number:	Conjunction
Gender:	ImpPrep
Case:	Interjection
Class:	Noun
Subclass:	Particle
Degree:	Preposition
Lemma(s):	Pronoun
	Verb
	Exclude...
	InterData...
	any lemma

CLASS Type:	Adverb
Tense:	
Voice:	
Mood:	
Person:	
Number:	
Gender:	
Case:	
Class:	
Subclass:	
Degree:	any
Lemma(s):	any lemma

CLASS Type:	Adverb
Tense:	
Voice:	
Mood:	noDegree
Person:	Comparative
Number:	Superlative
Gender:	<Exclude>
Case:	
Class:	
Subclass:	
Degree:	any
Lemma(s):	any lemma

When **Adverb** is chosen the following additional items become available to further narrow the definition for the Element:

#### *Degree and Lemma.*

Each of the parts of an Adverb can be defined further by the items in the pull -down list; Multiples items and Excludes are acceptable:

- Degree:** No (or Positive) Degree, Comparative, Superlative  
**Lemma:** Any Adverb (= <any lemma>) or choose from the Lemma List (restricted to Adverbs)

**Additional Information:** This follows traditional classifications. The category constitutes a large collection of fixed -form words which clearly are modifiers, modifying any word except a noun or pronoun. Some grammarians include as adverbs words which GRAMCORD classifies more traditionally as prepositions, particles, and conjunctions. For instance, adverbs which also function in the clause as a clause connector are classified as conjunctions (*e.g.*, **TOTE** when it means "then, thereupon" is always tagged as a conjunction.).

## ARTICLES:

CLASS Type:	[none]
Tense:	[none]
Voice:	Adjective
Mood:	Adverb
Person:	Article
Number:	Conjunction
Gender:	ImpPrep
Case:	Interjection
Class:	Noun
Subclass:	Particle
Degree:	Preposition
Lemma(s):	Pronoun
	Verb
	Exclude...
	InterData...

CLASS Type:	Article
Tense:	
Voice:	
Mood:	
Person:	
Number:	any
Gender:	any
Case:	any
Class:	
Subclass:	
Degree:	
Lemma(s):	any lemma

CLASS Type:	Article
Tense:	
Voice:	
Mood:	
Person:	
Number:	Plural
Gender:	Feminine
Case:	any
Class:	Nominative
Subclass:	Genitive
Degree:	Dative
Lemma(s):	Accusative
	Vocative
	<Exclude>

When **Article** is chosen the following additional items become available to further narrow the definition for the Element:

**Gender, Number, and Case** (NOTE: It is not necessary to define a Lemma for the Article since there is only one Article; consequently the Lemma field will be grayed out when Article is chosen as the Part of Speech.).

Each of the parts of an Article can be defined further by the items in the pull -down list; Multiple items and Excluded items are acceptable:

**Gender:** Masculine, Feminine, Neuter  
**Number:** Singular, Plural  
**Case:** Nominative, Genitive, Dative, Accusative, [Vocative]

**Additional Information:** The so-called "Pronominal use" of the Article is identified as an Article, not a Pronoun. There is no distinct Vocative form of the Article. It will be identified as Vocative only in cases where it is in agreement with a Vocative Substantive.

## 3 - 16 GRAMCORD Reference

### CONJUNCTIONS:

CLASS Type:	[none]
Tense:	[none]
Voice:	Adjective
Mood:	Adverb
Person:	Article
Number:	Conjunction
Gender:	ImpPrep
Case:	Interjection
Class:	Noun
Subclass:	Particle
Degree:	Preposition
Lemma(s):	Pronoun

CLASS Type:	Conjunction
Tense:	
Voice:	
Mood:	
Person:	
Number:	
Gender:	
Case:	
Class:	any
Subclass:	Coordinating
Degree:	Subordinating
Lemma(s):	<Exclude>

CLASS Type:	Conjunction
Tense:	
Voice:	
Mood:	
Person:	
Number:	
Gender:	
Case:	
Class:	Coordinating
Subclass:	any
Degree:	Interrogative
Lemma(s):	Continuative
	Correlative
	Disjunctive
	Copulative
	Inferential
	Explanatory
	Adversative
	<Exclude>

When **Conjunction** is chosen the following additional items become available to further narrow the definition for the Element:

*Subclass1 and Subclass2 fields, Lemma*

Each of the parts of an Conjunction can be defined further by the items in the pull-down list; Multiple items and Excluded items are acceptable:

- Subclass1:** Coordinating or Subordinating
- Subclass2:** Subclass of Coordinating or Subordinating (see below)
- Lemma:** Any Conjunction (<any lemma>) or Pick from Lemma List (restricted to Conjunctions)

- CB Coordinating, continuative *ἀλλά, δε, γαρ, μηδε, οὐν*
- CC Coordinating, Correlative: *εἴτε, ἢ, ἦτοι, και μητε, οὐδε, οὔτε, ποτερον, τε*
- CD Coordinating, Disjunctive: *ἢ, μηδε, μητε, οὐδε, οὔτε*
- CG Coordinating, interrogative: *ἄνατι, νυν, ποθεν, ποτε, που, πως*
- CK Coordinating, copulative: *και, οὔτε, τε*
- CQ Coordinating, inferential: *ἔρα, διο, διοπερ, διοτι, ὅθεν, οὐκουν, οὐν, τοιουν, τοιγαρουν, ὥστε*
- CX Coordinating, explanatory: *γαρ*
- CV Coordinating, adversative: *ἀλλά, δε, μεντοι, πλην*
- SC Subordinating, Causal: *διοτι, ἐπει, ἐπειδη, ἐπειδηπερ, γαρ, καθοτι, ὅτι*
- SE Subordinating, conditional: *ἂν, ἔαν, ἔανπερ, εἰ, εἰπερ, εἴτε*
- SF Subordinating, Final: *ἵνα, μη, μηποτε, ὅπως, ὥς*
- SG Subordinating, interrogative: *εἰ, μηποτε, ποθεν, ποτε, που, πως*
- SL Subordinating, Locational [of place]: *οἑπου, ὅθεν, οὐ*

- SN Subordinating, Nominal [Substantiva] ἵνα, καθως, μη, μηποτε, ὅπως, ὅτι, πως, ὡς
- SP Subordinating, comparative καθα, καθαπερ, καθο, καθοτι, καθως, καθωσπερ, ὡς, ὡσπερ
- SR Subordinating, Result ἵνα, ὅτι, ὡς, ὡστε
- SS Subordinating, concessive καιπερ, καιτι
- ST Subordinating, Temporal ἄχρι, ἔπαν, ἔπειδη, ἕως, ἥνικα, καθως, μεχρι, ὅταν, ὅτε, πριν, ὡς

**Additional Information:** Under the Conjunction classification GRAMCORD has identified words which act as connectors between words, phrases, clauses, or sentences. They are divided into two basic types: the *coordinating conjunctions*, connecting parallel grammatical structures, whether words or phrases or clauses or sentences, and the *subordinating conjunctions*, connecting dependent clauses (only clauses are involved in this category).

Sometimes the decision between coordinating and subordinating is a matter of punctuation, whether the clauses are treated as two separate sentences, or as one sentence with a main and a dependent clause (e.g., γάρ).

Connective phrases, where a prepositional phrase or an elliptical expression functions as a connector, are identified word by word and thus are not recognized as a functioning conjunction. (e.g., ἐφ' ὅσον, "as long as").

The Conjunction and Particle categories represent the most problematic classification issues of the GRAMCORD database. The lack of standard definitions among grammarians and the importance of context present difficulties which deserve the user's careful attention. To assist the user, the GRAMCORD Template Lemma List will only present those words classified by GRAMCORD as the Part of Speech chosen by the user. Further notes concerning grammatical classifications of Particles and Conjunctions appear in the Appendices of the *User's Manual*. Inexperienced users should refer to the appendix' word lists for information on words which may span the Conjunction, Particle, and Adverb classifications.

## IMPROPER PREPOSITION

CLASS Type:	[none]
Tense:	[none]
Voice:	Adjective
Mood:	Adverb
Person:	Article
Number:	Conjunction
Gender:	ImpPrep
Case:	Interjection
Class:	Noun
Subclass:	Particle
Degree:	Preposition
Lemma(s):	Pronoun
	Verb
	Exclude...
	InterData...

CLASS Type:	ImpPrep
Tense:	
Voice:	
Mood:	
Person:	
Number:	
Gender:	
Case:	any
Class:	Genitive
Subclass:	Dative
Degree:	Accusative
Lemma(s):	<Exclude>

When **Improper Preposition** is chosen the following additional items become available to further narrow the definition for the Element:

### *Case of Object, Lemma*

Each of the parts of an Improper Preposition can be defined further by the items in the pull-down list:

<b>Case of Object:</b>	Genitive, Dative
<b>Lemma:</b>	Any Improper Preposition (= <any lemma>) or choose from Lemma Pick List (restricted to Improper Prepositions)

**Additional Information:** Improper Preposition is a traditional term for adverbs which function as prepositions governing a case. They may also occur without a dependent case as regular adverbs (Accordingly, when functioning as regular adverbs, they are classified Adverb.). They do not combine with verb roots to produce compound words.

Almost always the case governed is genitive. There is only one exception in the New Testament (**ἄρα** with dative, Matt 13:29).

## INTERJECTIONS

CLASS Type:	[none] ↓
Tense:	[none]
Voice:	Adjective
Mood:	Adverb
Person:	Article
Number:	Conjunction
Gender:	ImpPrep
Case:	Interjection
Class:	Noun
Subclass:	Particle
Degree:	Preposition
Lemma(s):	Pronoun
	Verb
	Exclude...
	InterData...

When **Interjection** is chosen the following additional items become available to further narrow the definition for the Element: *No additional fields.*

**Additional Information:** Some forms of originally Imperative Verbs or forms derived from such are listed both as the Verb form and the Alternately as Interjections when they have become simple exclamations and particularly when person and number agreement are neglected. In this GRAMCORD attempts to be consistent with BAGD as much as possible. In publishing the text, editors often distinguish by accent the Imperative Verb and the Interjection. For example, **ἰδοῦ** versus **ἰδοῦ̄** (*cf.*, BAGD).

## 3 - 20 GRAMCORD Reference

### NOUNS:

CLASS Type:	[none]
Tense:	[none]
Voice:	Adjective
Mood:	Adverb
Person:	Article
Number:	Conjunction
Gender:	ImpPrep
Case:	Interjection
Class:	<b>Noun</b>
Subclass:	Particle
Degree:	Preposition
Lemma(s):	Pronoun
	Verb
	Exclude...
	InterData...

CLASS Type:	<b>Noun</b>
Tense:	
Voice:	
Mood:	
Person:	
Number:	any
Gender:	any
Case:	any
Class:	
Subclass:	
Degree:	
Lemma(s):	any lemma

CLASS Type:	<b>Noun</b>
Tense:	
Voice:	
Mood:	
Person:	
Number:	Plural
Gender:	Neuter
Case:	any
Class:	Nominative
Subclass:	Genitive
Degree:	Dative
Lemma(s):	Accusative
	Vocative
	<Exclude>

When **Noun** is chosen, the following additional items become available to further narrow the definition for the Element:

***Gender, Number, Case, Lemma.***

Each of the parts of an Nouns can be defined further by the items in the pulldown list:

***Gender:*** Masculine, Feminine, Neuter  
***Number:*** Singular, Plural  
***Case:*** Nominative, Genitive, Dative, Accusative, Vocative  
***Lemma:*** Any Noun (= <any lemma>) or choose from the Lemma Pick List (restricted to Nouns)

#### **Additional Information:**

Certain Adjectives are often used substantivally; the user should not presume that GRAMCORD classifies them as nouns, but will find that many of them will have Alternate Tags for both the Noun and Adjective classification. (See notes on Adjectives.) If GRAMCORD classifies an Adjective as a Noun, it will appear on the Lemma List when Noun has been chosen as the Part of Speech, and on the Adjective list as well.

## PARTICLES:

CLASS Type:	[none]
Tense:	[none]
Voice:	Adjective
Mood:	Adverb
Person:	Article
Number:	Conjunction
Gender:	ImpPrep
Case:	Interjection
Class:	Noun
Subclass:	Particle
Degree:	Preposition
Lemma(s):	Pronoun
	Verb
	Exclude...
	InterData...

CLASS Type:	Particle
Tense:	Alternating
Voice:	Indefinite
Mood:	Interrogative
Person:	Emphatic
Number:	Negative
Gender:	Comparative
Case:	Subjective
Class:	Modal
Subclass:	<Exclude>
Degree:	any
Lemma(s):	any lemma

When **Particle** is chosen the following additional items become available to further narrow the definition for the Element:

### *Class, Lemma.*

Each of the parts of an Particle can be defined further by the items in the pull-down list; Multiple items and Excluded items are acceptable:

Alternating:δε, μεν

indefinite:ποτε, που, πως

interrogative:άρα, μη, μηποτε, μητι, ού, ούχ', ούχι, ούκ, ούδε, ποθεν

emphatic:άμην, γε, δη, μεν, μενουν, μενουγγε, μην, ναι, νη

Negative:μη, μηγε, μηποτε, μητιγε, ού, ούχ', ούχι, ούκ

comparative:ή, ήπερ, καθαπερ, πως, ώσει, ώσπερ, ώσπερει

Subjective:ώς

modal (Uncertainty)άν, έαν

The Conjunction and Particle categories represent the most problematic classification issues of the GRAMCORD database. The lack of standard definitions among grammarians and the importance of context present difficulties which deserve the user's careful attention. To assist the user, the GRAMCORD Template Lemma List will only present those words classified by GRAMCORD as the Part of Speech chosen by the user. Further notes concerning grammatical classifications of Particles and Conjunctions appear in the Appendices of the *User's Manual*. Inexperienced users should refer to the appendix' word lists for information on words which may span the Conjunction, Particle, and Adverb classifications.

## PREPOSITIONS:

CLASS Type:	[none] ↓
Tense:	[none]
Voice:	Adjective
Mood:	Adverb
Person:	Article
Number:	Conjunction
Gender:	ImpPrep
Case:	Interjection
Class:	Noun
Subclass:	Particle
Degree:	Preposition
Lemma(s):	Pronoun
	Verb
	Exclude...
	InterData...

CLASS Type:	Preposition ↓
Tense:	↓
Voice:	↓
Mood:	↓
Person:	↓
Number:	↓
Gender:	↓
Case:	any ↑
Class:	Genitive
Subclass:	Dative
Degree:	Accusative
Lemma(s):	<Exclude>

When **Preposition** is chosen the following additional items become available to further narrow the definition for the Element:

### *Case of Object, Lemma*

Each of the parts of an Preposition can be defined further by the items in the pull-down list; Multiple items and Excluded items are acceptable:

- Case of Object:** Genitive, Dative, Accusative
- Lemma:** Any Preposition (= <any lemma>) or choose from Lemma Pick List (restricted to Prepositions)

**Additional Information:** The Preposition category is restricted to the traditional "Proper Prepositions"; it does not include the Adverbs and Adjectives which function as Prepositions governing a Case. For the latter, the User should consult the "Improper Preposition" category.

## PRONOUNS:

CLASS Type:	[none]
Tense:	[none]
Voice:	Adjective
Mood:	Adverb
Person:	Article
Number:	Conjunction
Gender:	ImpPrep
Case:	Interjection
Class:	Noun
Subclass:	Particle
Degree:	Preposition
Lemma(s):	Pronoun

CLASS Type:	Pronoun
Tense:	
Voice:	
Mood:	
Person:	
Number:	any
Gender:	any
Case:	any
Class:	any
Subclass:	
Degree:	
Lemma(s):	any lemma

CLASS Type:	Pronoun
Tense:	
Voice:	
Mood:	
Person:	
Number:	Singular
Gender:	Feminine
Case:	Genitive
Class:	any
Subclass:	Adjectival
Degree:	Adj Intensive
Lemma(s):	Adj Demonstrative

When **Pronoun** is chosen the following additional items become available to further narrow the definition for the Element:

*Subclass1, Subclass2, Gender, Number, Case, Lemma*

Each of the parts of an Pronoun can be defined further by the items in the pull-down list:

### **Subclass1 & Subclass2**

AI	Adjectival Intensive	CR	CoRelative
AD	Adjectival Demonstrative	IF	Indefinite
AG	Adjectival interrogative	DE	Demonstrative
AF	Adjectival indefinite	S1	possessive first person
P1	Personal, first person	S2	reflexive second person
P2	Personal, second person	X1	reflexive first person
P3	Personal, third person	X2	reflexive second person
PI	Personal, Intensive	X3	reflexive third person
RR	Relative	RC	Reciprocal
IR	Indefinite Relative	IG	Interrogative

**Gender:** Masculine, Feminine, Neuter

**Number:** Singular, Plural

**Case:** Nominative, Genitive, Dative, Accusative, Vocative

**Lemma:** Any Pronoun (= <any lemma>) or choose from the Lemma Pick List (restricted to Pronouns)

**Additional Information:** Classification terms within the Pronoun category are used according to their normal and traditional meanings, but combined in ways designed to give additional functional coding.

## 3 - 24 GRAMCORD Reference

Frequently the Demonstrative, Interrogative, Indefinite, and Intensive Pronouns function as Adjectives, modifying a Noun actually present. These have been identified by the additional Adjective code assigned, *i.e.*, Adjectival Demonstrative. To find all Demonstrative Pronouns the User should select both "Adjectival Demonstrative" and "Demonstative."

Personal and Reflexive Pronouns are classified so as to show the person involved.

In some Grammars the Possessive Adjectives are classified as "Pronouns." The GRAMCORD database version 5.0 tags these as Adjectives and not Pronouns.

The Reflexive Plural Pronoun **ἑαυτῶν** in New Testament, as in all Hellenistic Greek, functions for all three persons. It is identified as to Person from the context.

Editors disagree whether **αὐτοῦ** should be classed as the Reflexive **ἑαυτοῦ** contracted to **αὐτοῦ** or as a simple Personal **αὐτοῦ**, which in Hellenistic Greek apparently functioned as a Reflexive. Where the context clearly demands a Reflexive sense, GRAMCORD identifies it as such.

## VERBS:

CLASS Type:	[none]
Tense:	[none]
Voice:	Adjective
Mood:	Adverb
Person:	Article
Number:	Conjunction
Gender:	ImpPrep
Case:	Interjection
Class:	Noun
Subclass:	Particle
Degree:	Preposition
Lemma(s):	Pronoun

CLASS Type:	Verb
Tense:	any
Voice:	any
Mood:	any
Person:	any
Number:	any
Gender:	
Case:	
Class:	
Subclass:	
Degree:	
Lemma(s):	any lemma

CLASS Type:	Verb
Tense:	Pluperfect
Voice:	Active
Mood:	Indicative
Person:	Third
Number:	any
Gender:	Singular
Case:	Plural
Class:	<Exclude>
Subclass:	
Degree:	
Lemma(s):	

When **Verb** is chosen the following additional items become available to further narrow the definition for the Element:

*Person, Number, Tense, Voice, Mood, Participial Gender, Participial Number, Participial Case, Lemma.*

Each of the parts of a Verb can be defined further by the items in the pull-down list (the capital letter in each of the following represents the GRAMCORD code as displayed in the Script file):

- Person:** First, Second, Third  
**Number:** Singular, Plural  
**Tense:** Present, Imperfect, Future, Aorist, pRfect, pLuperfect  
**Voice:** Active, Middle, Passive  
**Mood:** Indicative, Subjunctive, Optative, iMperati, iNfinitive, Participle  
**Participial Gender:** Masculine, Feminine, Neuter  
**Participial Number:** Singular, Plural  
**Participial Case:** Nominative, Genitive, Dative, Accusative, Vocative  
**Lemma:** Any Verb (= <any lemma>) or choose from the Lemma Pick List (restricted to Verbs)

**Additional Information:**

**Lemma forms** (the lexical listing forms) of verbs are given, with very few exceptions, after the pattern of the BAGD lexicon.

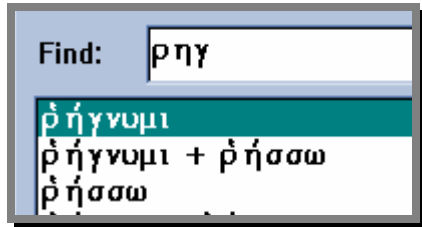
**Deponent verbs** are indicated by the middle or passive first person ending - [o]μαι. In other words, in conformity to the morphological orientation of GRAMCORD, *deponent*

## 3 - 26 GRAMCORD Reference

*verbs are classified in the database by their form, not their meaning.* Thus, **βούλομαι** would never be concorded as an active voice verb.

**Certain second Aorist** verbs are listed by their distinctive second Aorist roots, such as **είδον, είπον**; others are not, as **ἔρχομαι, ἦλθον**. This again is done in an attempt to be as consistent with the BAGD Lexicon as possible.

**Composite and Supplet** verbs are in general listed separately in the GRAMCORD database, for the user who wishes to find the alternate forms. For example, **ρήγνυμι** and **ρήσσω** are encoded separately in the database so that the user can find just the occu

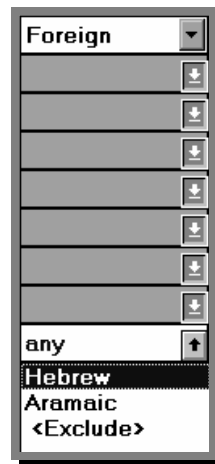
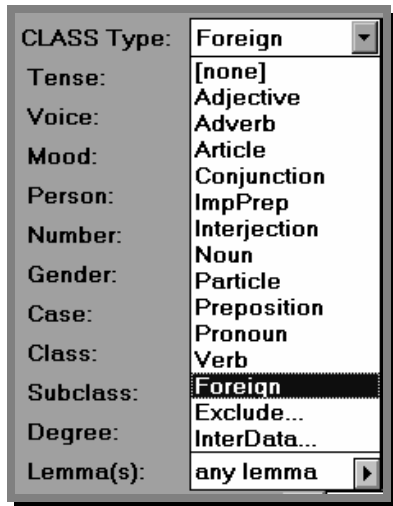


rences of either one. The Lemma Pick List for such a verb will have 3 entries, the first for **ρήγνυμι** only, the second for **ρήσσω** only, and a third which has both verbs listed together, so that the user can find all occurrences of the word, regardless of the spelling of the Lemma.

**Six tenses** are used in the concording process. There is no New Testament occurrence of an inflected future perfect, only a couple of possible periphrastic forms of that tense.

**First and second Aorists, Future, and Perfects** are not distinguished in the GRAMCORD database. Differentiation possesses semantic significance in only a very few instances.

## FOREIGN WORD



**Foreign Word** is a new category of tag in the GRAMCORD Database, version 5.0, to identify the Foreign Words in the Greek New Testament. In deciding what is a “Foreign Word” in the GNT we are following the decisions of BAGD, who apparently have classified ten words as Foreign primarily based on the fact that they are reported in

the GNT in “transliteration” and then translated into Greek.

These ten words are: *αλληλουια*, *ελωι*, *εφφαθα*, *ηλι*, *κουμ*, *λεμα*, *μαραναθα*, *σαβαχθανι*, *ταλιθα*, *ωσαννα*. While some might feel that *ταβιθα* should also be in this list, BAGD does not classify it as such, and we are following BAGD’s choices “religiously” when possible.

The Tags used to identify these Foreign words are:

- **FA** - Foreign, Aramaic
- **FH** - Foreign, Hebrew

“Used As” **Alternate Tags** are also provided for each of these words in order to approximate how they are functioning. You must, however, be cautious in assuming that these “Used As” tags fully represent the original’s use, since there are parts of Hebrew and Aramaic words which cannot be accounted for with Greek tags. For example, *σαβαχθανι* is “Used As” parsed as V2SAAI (Verb, 2<sup>nd</sup> Sing Aor Act Ind), but in Aramaic there is no “Aorist” tense (it just happens to be the closest to the Aramaic usage) and this verb has a 1<sup>st</sup> Sing Object Suffix, which cannot be represented by Greek tags at all.

The Foreign Words and their tags are:

- **αλληλουια**: 4x. Rev 19:1,3,4,6. BAGD gives no grammatical classification but says that it represents the Hebrew translated “lit. *Praise Yahweh*,” (יהוה-ללהללה). This one probably is functioning as an Interjection or since its parallel with *αμην*, an emphatic particle. The first tag is: **FH**, the second tag is **TM** (parTicle, eMphatic)
- **ελωι**: 2x at Mk 15:34. BAGD has no grammatical classification, but says that this is Aramaic for “*ηλί my God*” which corresponds to יהוה). The Greek tags cannot match the Hebrew/Aramaic morphology since this word is a Noun, Voc., Masc., Sg.,

### 3 - 28 GRAMCORD Reference

which also contains a first singular pronominal suffix. The first tag is **FA**, the second tag is **NMSV**.

- **εφφαθα:** Mk 7:34. BAGD says "Aram. Word, translated **διανοίχθητι** *be opened*"; This is a contracted ethpa'el perfect (**פתחתי**). The first tag is **FA**, the second tag is **V2SAPM** (Verb, 2nd, Sing, Aorist, Passive, iMperative), which is as close as we can get with the Greek tags.
- **ηλι:** 2x at Mt 27:46. BAGD says: "= **אלי** *my God* (Hebr. Ps 22:2)"; The first tag is **FH**, the second tag is **NMSV** (Noun, Masc, Sing, Vocative).
- **κουμ:** Mark 5:41. BAGD says "Mesopotamian form of the imper. **קום**, for which Palestinian Aramaic has **קום**, *stand up*" (by which they evidently mean that Aramaic spoken in the Mesopotamian region did not have the separate feminine imp'v form, as did Palestinian Aramaic and Hebrew, since the other word **ταλιθα** is clearly Aramaic feminine). The first tag is **FA**, the second tag is **V2SAAM** (Verb, 2nd, Sing, Aorist, Active, iMperative).
- **λαμα** or **λεμα:** BAGD lists as **λαμά**; Matt 27:46 (NA<sup>27</sup>=**λεμά**; TR=**λαμά**) and Mark 15:34 (NA<sup>27</sup>=**λεμά**; TR=**λαμμά**). The TR is transliterating the Hebrew word **למה**, while the NA<sup>27</sup> is transliterating the Aramaic word **למא**, both of which mean "Why ?" The first tag is **FA**, the second tag is **TG** (parTicle, interroGative)
- **μαραναθα:** This occurs one time at 1Cor 16 :22. BAGD says (=NA<sup>25</sup>) "**μαρὰν ἄθα** = **אחא מרן** (our) *Lord has come*, better separated **μαράνα θᾶ** = **אחא מרנא** (our) *Lord, come!* An Aramaic formula..." UBS<sup>4</sup>/NA<sup>27</sup> print as **μαρανα θα**. **NOTE:** NA<sup>27</sup> prints with diacritics **μαράνα θᾶ**, UBS<sup>4</sup> prints without diacritics. The first tag for **μαρανα** is **FA**; the second tag is **NMSV** (Noun, Masc, Sg, Vocative). The first tag for **θα** is **FA**, the second tag is **V2SAAM** (Verb, 2nd, Sg, Aor, Act, iMperative).
- **σαβαχθανι:** Matt 27:46 and Mark 15:34. BAGD says: "Aram. **שבקתני** instead of the Hebr. **עזבתני** Ps 22:2; fr. **קשב** *forsake: thou hast forsaken me*". The first tag is **FA**, the second tag is **V2SAAI**, the 1sg suffix cannot be tagged using the Greek tags
- **ταβιθα:** Even though this is a foreign word and is translated in the text as Dorkas, since it is listed by BAGD as a Noun, we have left it listed as a Fem Noun
- **ταλιθα:** 1x at Mark 5:4. BAGD says: "Aram. **אחא** or **אחא**, emphatic state of **אחא**...*girl, little girl*". The first tag is **FA**, the second tag is **NFSV** (Noun, Fem, Sing, Vocative).
- **ωσαννα:** 6x; Matt 21:9 (2x), 15; Mark 11:9, 10; John 12:13. BAGD says: "...=Aram. **נא** = Hebr. **נא** *הושיעה* ...indecl. *Hosanna*=*'help'* or *'save, I pray'*, an appeal that became a liturgical formula..." The first tag is **FA**, the second tag is **TM** (parTicle, eMphatic).

## LEMMA

CLASS Type:	Verb	↓
Tense:	any	↓
Voice:	any	↓
Mood:	any	↓
Person:	any	↓
Number:	any	↓
Gender:		↓
Case:		↓
Class:		↓
Subclass:		↓
Degree:		↓
Lemma(s):	any lemma	▶

CLASS Type:	Verb	↓
Tense:	any	↓
Voice:	any	↓
Mood:	any	↓
Person:	any	↓
Number:	any	↓
Gender:		↓
Case:		↓
Class:		↓
Subclass:		↓
Degree:		↓
Lemma(s):	2 chosen	▶

When the User selects **Lemma**, ( *i.e.*, the Lexical Listing form) a new Window is opened which presents a list of the Lemmas to choose from. The Lemmas presented will be restricted to those which actually correspond to the Class Type (Part of Speech) chosen.

Thus the User cannot pick a Lemma which cannot be found under the Class Type designation. After the Lemma(s) have been chosen the main Template screen will reflect the number of Lemmas the User has selected for the Element.

GRAMCORD Lemma Selection[s]

Exclude

ἀγαθοεργέω  
 ἀγαθοποιέω  
 ἀγαλλιάω  
 ἀγανακτέω  
 ἀγαπάω  
 ἀγαρεύω  
 ἀγγέλλω  
ἀγιάζω  
 ἀγνίζω

ἀγιάζω  
 ἀγνίζω

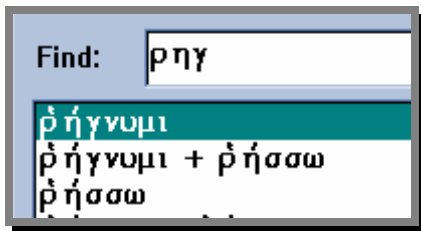
UBS GNT Dict.

ἀγιάζω *set apart as sacred to God; make holy, consecrate; regard as sacred; purify, cleanse*

### 3 - 30 GRAMCORD Reference

**Lemma**, also referred to as “Lexeme,” means the form in which the word occurs in the Lexicon (BAGD is GRAMCORD’s standard for Lemma classification). In general, the Lemma corresponds to what most people think of as the basic or Lexical listing form of the word, sometimes mistakenly called the “root.” For example, the Interjection **ἰδοῦ** is listed in the Lexicon under the Lemma **ἰδοῦ**, not under the Verb form it ultimately derives from, namely **εἶδον**. Thus **ἰδοῦ** will only be found on the GRAMCORD Lemma List if Interjection has been chosen as the Part of Speech; it will never be found when searching for Verbs. In addition, GRAMCORD, following the BAGD Lexicon, lists **εἶδον** by itself, not with **ὁράω**. The next paragraph explains how GRAMCORD handles these types of Verbs.

**Composite and Supplet** verbs are in general listed separately in the GRAMCORD database, for the user who wishes to find the alternate forms. For example, **ῥήγνυμι** and **ῥήσσω** are encoded separately in the database so that the user can find just the occurrences of either one.



The Lemma Pick List for such a verb will have 3 entries, the first for **ῥήγνυμι** only, the second for **ῥήσσω** only, and a third which has both verbs listed together, so that the user can find all occurrences of the word, regardless of the spelling of the Lemma.

**Wildcarding" Lemmas and Words:** The GRAMCORD Lemma Pick List allows you to choose from any Lemma which occurs in the New Testament. However, there may be times when you desire to find all the forms of a particular Verbal, etc., root with its Prepositional prefixes. For example, you may wish to find all the forms of **βάλλω**, like **καταβάλλω**, **ἐπιβάλλω**, **ἐκβάλλω**, etc. GRAMCORD will accept a wildcard Search to find all of these forms. To perform a wildcard Search for all the forms of **βάλλω**, do the following:



1. Start the GRAMCORD Template by clicking on the GRAMCORD button.
2. Select "Verb" as your first Element.
3. Click on the “Lemma” button.
4. In the “Find” box type first a Dash character followed by **βάλλω** with no intervening spaces.
5. Press the “ADD” button and then the “OK” button. When you return to the Main Template you’ll notice that the Lemma box now has “Wildcards” in it to indicate what you have chosen.
6. Run the “Search” and you will see all the various forms of prefixed **βάλλω**.

Lemma(s): **wildcard(s)** ▶

If you want all the forms of **-βάλλω** including **βάλλω** itself, you simply ADD the verb both with and without the dash preceding it and GRAMCORD will find both for you at the same time.

**The same Dash character may be used as a wildcard indicator at the end of Lemmas and Words** as well. For example, to find all Verbs beginning with the Preposition **κατά** you would enter into the “Find” box both **κατ-** and **καθ-**.

**NOTE:** There is no way to search for “roots” from the GRAMCORD Template (*e.g.*, all the words which have **δικ-** as their “root,” *i.e.*, **δικαιώω, δίκη, δικαίωμα, δικαιοσύνη**, *etc.*). For “root” searches, the User should search the GRAMCORD Parsed Greek New Testament from the Bible Companion window, using appropriate wildcards (*e.g.*, **δικ\***), which will find all the lemmas which contain that “root” in the Lemma field of that text. In the near future *The Semantic Domain Lexicon* by Louw and Nida will be installed and which will hopefully facilitate such searches.

## ***THE FOOTER OF THE TEMPLATE: OPTIONS FOR THE SEARCH:***

### **PROXIMITY**



**Proximity** (referred to in GRAMCORD as Subcontextfield) is used to set the distance

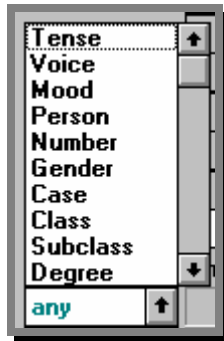
between Elements in the Construction. The "Spin Buttons" located below and between each of the Elements can be incremented and decremented to define the allowable (but not the necessary) distance between the Elements it straddles. Thus, in addition to adjusting the Context (Contextfield) for the whole Construction, the User may adjust the distance between each Element in the Construction. **Proximity** between Elements works in conjunction with the Context field specified for the whole Construction, so that when Proximity is incremented, Context is automatically incremented (NOTE: Context is not automatically decremented when Proximity is decremented.).

Default for Proximity between Elements is <any>. This means that GRAMCORD will search for the Elements within the limits set by the Context field. For example, if a Construction contains 5 Elements, the Context field will automatically be set to 5, and with the Proximities set to <any>, GRAMCORD will search for the Construction with no space between each of the Elements. However, if Context is set to 6, with Proximity left at <any>, GRAMCORD will allow for up to one word to occur between each of the Elements up to the Context field total of 6 for the whole Construction. This is another reason why the User should leave a generous Context for the whole Construction, since GRAMCORD uses the total Context field as it performs the "<any> Proximity" check.

## AGREE[MENT]



GRAMCORD allows the User to establish **Agreement** between any of the Elements defined in the Construction. Agreement is chosen from the Pull-Up List on the Left (multiple Agrees are okay), and the Elements for which the Agreement is to be valid are indicated by clicking the check box below each of the Elements desired.



GRAMCORD allows Agreement on any field ( *i.e.*, Tense, Voice, Mood, Person, Number, Gender, Case, Class, SubClass, Degree, Lemma, Same Word Form), as long as the Elements for which Agreement is established have those characteristics in common. For example, Agreement can be set for Gender, Number, and Case between an Article and a Participle, in order to find Substantival Participles.

## 3 - 34 GRAMCORD Reference

### POSITION

“Position” was known in earlier versions of GRAMCORD as the “PLACEMENT” and “SUBPLACEMENT” options. The “Position” option allows you to specify the exact location of any Element in a Search within a Clause or Sentence. This location can be one location (*e.g.*, the 3<sup>rd</sup> word after a Major Stop) or a Range of locations (*e.g.*, anywhere between the 2<sup>nd</sup> and 4<sup>th</sup> word after a Minor Stop). While there are many uses for the “Position” option, one obvious one would be to try to narrow down the location of positives within a Construction (see below for an example).

The Label and Button for “Position” will be found at the bottom of the Main GRAMCORD Template, with the designation “Position” at the left and the “button” for each Element directly below the column for that Element. Initially the button will read “none,” and will be grayed out until the Element column is activated. Once the button has become active, clicking on it will bring up a second Template which will allow you to define the position desired more exactly.

Position:	none	none	none	none	none
-----------	------	------	------	------	------

The **Placement/Position Dialog Template** is laid out in a very straightforward manner, making your choices simple. Note that it tells you at the top which Construction and Element the Position criteria will apply to. A couple of things to keep in mind, however:

- **Minor Stop** refers to comma and dash.
- **Major Stop** refers to periods, question marks, and high points (colon, semicolon).
- **Position** is selected by standard Windows’ conventions:
  - Mouse Click Selects
  - Ctrl-Mouse Click Deselects or Selects multiple random items
  - Shift-Mouse Click Select an unbroken Range of items.

Placement/Position Dialog

Construct: 1      Element: 1

Placement Delimiter

Placement following minor stop

Placement following major stop

Placement following minor OR major stop

Allow Intervening Punctuation

Position

1  
2  
3  
4  
5  
6  
7  
8  
9

OK

Cancel